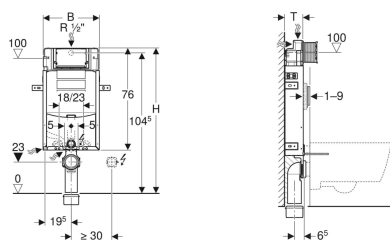


Geberit Kombifix element for wall-hung WC, 108 cm, with Sigma concealed cistern 12 cm



Example image



Application purposes

- For masonry walls
- For installation in part or room-height prewall installations
- For wall-hung WCs with connection dimensions in accordance with EN 33:2011
- For single flush, dual flush or stop-and-go flush

Characteristics

- Powder-coated mounting frame
- Mounting frame with four fixing brackets
- Fastening for connection bend can be mounted without tools from front
- Concealed cistern with front actuation
- Concealed cistern, fully insulated against condensation
- Immediate post flush possible with factory setting

- Tool-free installation and maintenance work on concealed cistern
- Water supply connection on the rear or top centre
- Protection box for service opening can be cut to length
- With conduit pipe for feed pipe for Geberit AquaClean shower toilets and for connection cable
- Fastening option for electrical connection

Technical data

Flow pressure (bar) - min. to max.	0.1–10 bar
Flush volume, factory setting (l)	6 / 3 l
Flush volume large, adjustment range (l)	4 / 4.5 / 6 / 7.5 l
Flush volume small, adjustment range (l)	2–4 l
Product material	Steel
Height-adjustable	No

Scope of delivery

- Water supply connection R 1/2", compatible with MasterFix and MeplaFix, with integrated angle stop valve and hand wheel
- Protection box for service opening
- Connection set for WC, Ø 90 mm
- Connection bend made of PE-HD, Ø 90 mm
- Adapter socket made of PE-HD, Ø 90 / 110 mm
- Filling segment
- 2 protection plugs
- 2 threaded rods M12
- Fastening material

Art. no.	B / width (cm)	H / height (cm)	T / depth (cm)
110.350.00.5	42 cm	108 cm	12 cm

Accessories

- Geberit Kombifix set of leg supports
- Geberit Kombifix set of studs with foot plate



- Actuator plate has to be ordered separately